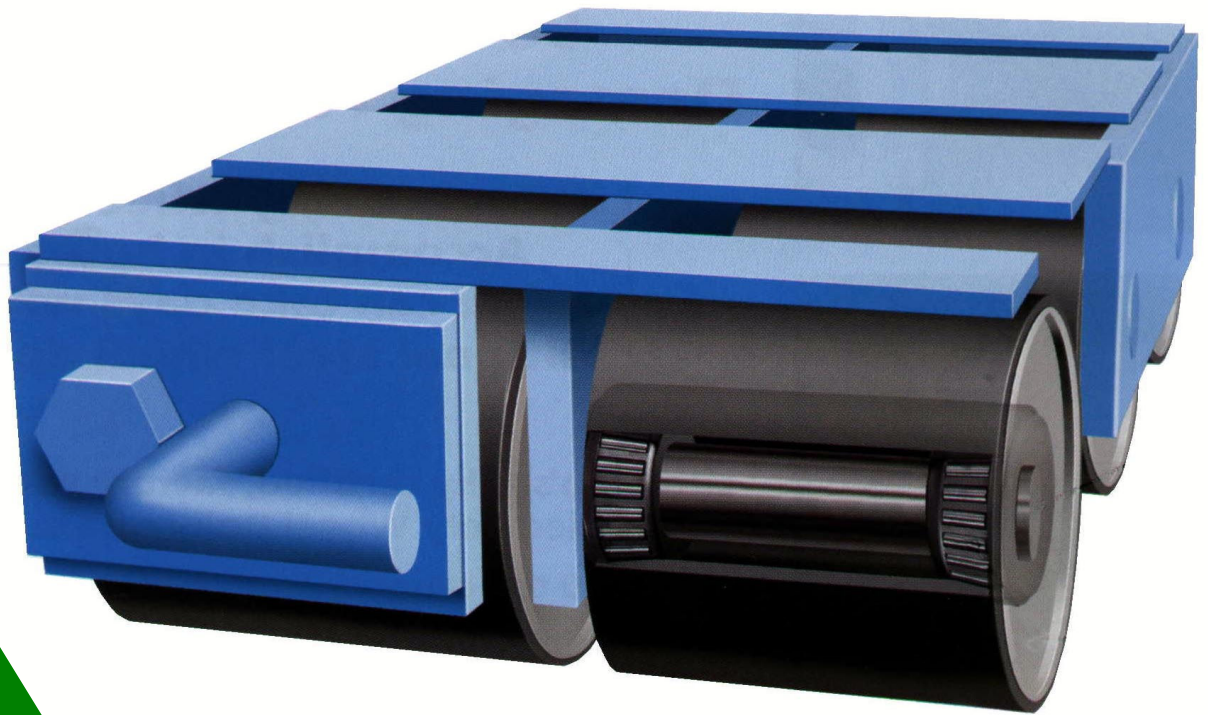


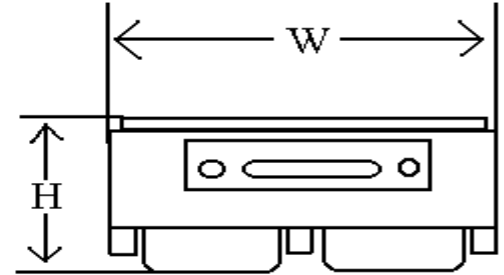
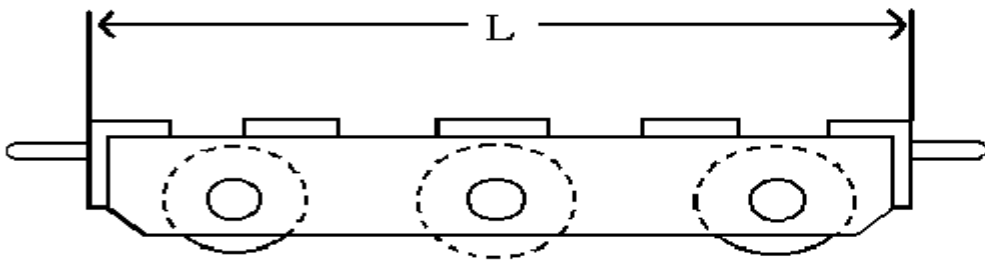


# CUSTOM MACHINERY ROLLERS

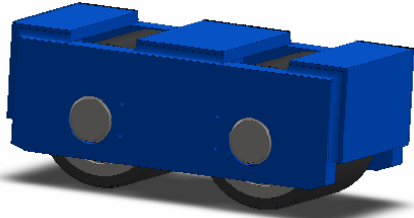
by  
LIFT SYSTEMS, INC.



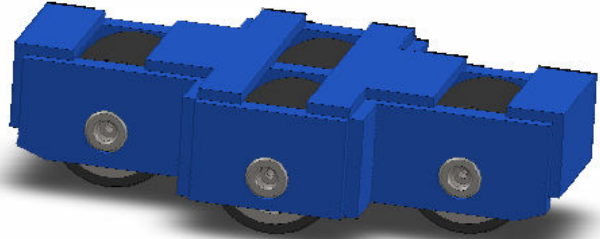
***Global Leaders in Specialized  
Machinery Moving  
Equipment!***



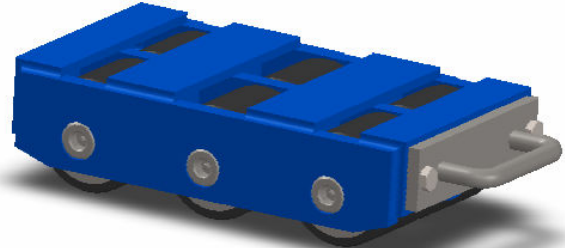
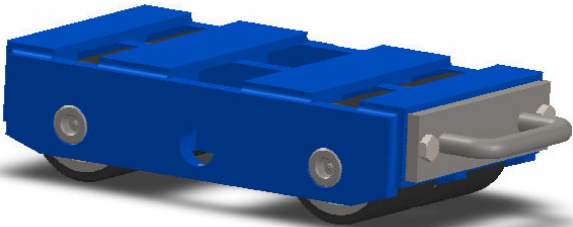
Model #	Dimensions (L x W x H)	Capacity (tons)	# and Diameter Wheels Axles	
<b>Steel Wheel</b>				
ES15S	11 1/2" x 5 1/2" x 4 1/2"	15	2-3 3/4"	2-1 1/2"
TS15S	17" x 10 1/4" x 4 1/2"	15	4-3 3/4"	3-1 1/2"
CS25S	17" x 10 1/4" x 4 1/2"	25	4-3 3/4"	2-1 1/2"
CS40S	17" x 10 1/4" x 4 1/2"	40	6-3 3/4"	3-1 1/2"
CS60S	17" x 15" x 4 1/2"	60	9-3 3/4"	3-1 1/2"
SS25S	24 1/2" x 12" x 5"	25	4-3 3/4"	4-1 1/2"
SS40S	24 1/2" x 12" x 5"	40	8-3 3/4"	4-1 1/2"
B100S	37 1/2" x 17" x 9 3/4"	100	9-8"	3-1 3/4"
<b>Poly Wheel</b>				
ES12P	11 1/2" x 5 1/2" x 4 7/8"	12	2-4 1/2"	2-1 1/2"
TS15P	17" x 10 1/4" x 4 7/8"	15	4-4 1/2"	3-1 1/2"
CS24P	17" x 10 1/4" x 4 7/8"	24	4-4 1/2"	2-1 1/2"
CS36P	17" x 10 1/4" x 4 7/8"	36	6-4 1/2"	3-1 1/2"
CS54P	17" x 15" x 4 7/8"	54	9-4 1/2"	3-1 1/2"
SS24P	24 1/2" x 12" x 5 3/8"	24	4-4 1/2"	4-1 1/2"
SS36P	24 1/2" x 12" x 5 3/8"	36	8-4 1/2"	4-1 1/2"
B75P	37 1/2" x 17" x 9 3/4"	75	9-8"	3-1 3/4"



ES—Frame Model  
 Available in  
 Steel—ES15S  
 Poly—ES12P  
 Includes: Removable handle  
 Optional: Swivel Plate & Tow  
 Handle (Not Standard)



TS—Frame Model  
 Available in  
 Steel—TS15S  
 Poly—TS15P  
 Optional: Swivel Plate & Tow  
 Handle (Not Standard)



CS—Frame Models  
 Available in  
 Steel—CS25S, CS40S, CS 60S  
 Poly—CS24P, CS36P, CS54P  
 Includes: Removable handles  
 Optional: Swivel Plate (Not Standard)

- Tested under tough, real conditions.
- Various Capacities available: From 5 tons to 100 tons per roller.
- High-capacity (14,700 lbs.) tapered roller bearings.
- High strength stressproof shafting.
- Axles have easily accessed, recessed grease fittings.
- Non-marking Polyurethane wheels are available in most models..
- Removable handles for tight places.
- Most models available with lighter, aluminum frames.

**We will customize any way possible, to fit your needs**

**LIFT SYSTEMS, INC.**

**OFFICE:** 1505 - 7th Street  
 East Moline, IL 61244  
**MAILING ADDRESS:** P.O. Box 906  
 Moline, IL 61266

**TEL:** +1-309-764-9842  
**FAX:** +1-309-764-9848  
**EMAIL:** [liftit@lift-systems.com](mailto:liftit@lift-systems.com)  
**WEB:** [www.lift-systems.com](http://www.lift-systems.com)

**LIFT SYSTEMS INC. (Canada)**

35 Longworth Lane  
 Woodstock, Ontario, N4V 1G6  
**TEL:** +1-519-539-0213  
**EMAIL:** [canada@lift-systems.com](mailto:canada@lift-systems.com)